



# Modern history

A Victorian facade gives little hint of the ultra-modern extension behind.



Room to play ... the new owners added a pool to the north-facing back garden.

**F**orm follows function" is a quote used to describe the work of architect Frank Lloyd Wright. It is also the name of the architectural practice behind the design of this house in Bronte, where a two-storey extension is concealed behind a Victorian facade.

"It's a heritage-listed street. We had to make sure the additions were concealed," says the architect, Keith Glover, who worked with the practice's co-director, interior designer Trudi Scrymgeour.

The owners, a couple with three children under the age of five, initially planned to renovate another house. "Trudi and I were in the middle of the development application when they fell in love with this house," Glover says. "This place was in a better street and suburb. It was going to meet their needs for the long term."

While the Bronte house offered a fine Victorian facade and north-facing back garden, it wasn't large enough for a family of five and still required considerable work.

"There weren't sufficient bedrooms, or a separate area for the children to play," Glover says. And although the owners weren't clear about the form the new wing should take, they wanted to be able to watch their children from as many aspects as possible within the home.

"The youngest is only 10 months old, so sight lines were important."



room to play ... the new owners added a pool to the north-facing back garden.



**Raine & Horne**

rhsouthwestrocks.com.au  
we'll look after you



WEB rh.com.au

**AUCTION** on site at 12 Dulcoughi St.  
Crescent Head at 11am Sat 12th Dec 2009

**DAVID MAXWELL** 0412 853 102

## Crescent Head

### Panoramic Ocean Views

Truly a magnificent home with prestige written all over it. This quality three bedroom home plus two bedroom fully self contained flat with its own private entrance is admired by all who walk past its doors. The main bedroom features walk-in-robe plus large ensuite while the expansive living areas enjoy an open plan taking in the spectacular views. Garaging includes two double lockup garages. This property enjoys one of the best views in Crescent Head.

**South West Rocks 6566 6116**

Victorian facade and the north-facing back garden, it wasn't large enough for a family of five and still required considerable work.

"There weren't sufficient bedrooms, or a separate area for the children to play," Glover says. And although the owners weren't clear about the form the new wing should take, they wanted to be able to watch their children from as many aspects as possible within the home.

"The youngest is only 10 months old, so sight lines were important."

Form Follows Function retained the original four rooms and removed a lean-to, which contained the kitchen, bathroom and laundry. The new wing, built in glazed bricks and timber (first floor), is clearly distinguishable from the original structure. "Fortunately, the front rooms were in reasonably good condition," Glover says. "They still had the open fireplaces and cornices."

### Old and new

On one side of the hallway, two rooms were opened up to form a large rumpus room for the children, while on the other are a guest bedroom and new bathroom-powder room.

"Often the front room of a terrace is used for formal entertaining but our clients are fairly informal. It made more sense to keep the children at a relatively close range," Glover says.

While the view to the street is through arched Victorian windows, the vista to the back garden is streamlined and

### We used the skylight ... as a point of separation between the adults' and children's bedrooms.

Keith Glover, architect

contemporary. The transition point between the old and new sections is an American oak staircase with timber treads that "pierce" the floor-to-ceiling timber balustrades.

"There's a little bit of Charles Rennie Mackintosh [an architect who operated in the early 20th century and was considered the first modernist] to this design," Glover says.

Past the staircase, the new open-plan kitchen, living and dining areas are completely open to maximise the northern aspect and garden views. Glass and aluminium bifold doors can be opened out to allow for a seamless



transition between the indoor and outdoor spaces.

"Our clients wanted to blur the division between indoors and out," Glover says. "They also wanted to see the children when they are in the garden."

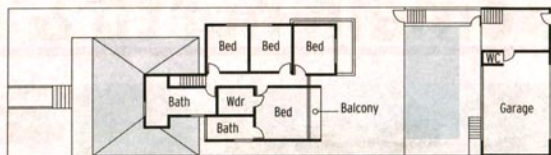
### The finishes

As there are no formal divisions in the living areas, Form Follows Function delineated the open-plan space with the use of flooring materials. The floor in the lounge is timber, while the floor in the kitchen is basalt. "We wanted to open up the house as much as possible," says Glover, who included in the kitchen a toughened-glass splashback that doubles as a window to a side garden. "Eventually, the side wall will be covered with vines."

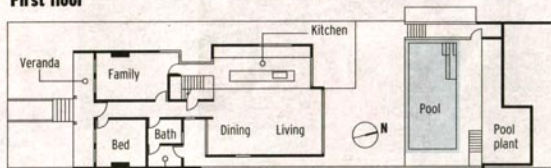
Form Follows Function used a limited palette of materials for the kitchen. American oak joinery features, while the cupboards below the island bench are finished in polyurethane. An American oak table extends from the central island bench. Balanced on a single chrome leg, it acts as a gathering point.

### Family-friendly

Because the children are young, the brief was for all the bedrooms to be on the first floor. "We used the skylight along the corridor as a point of separation between the adults' and children's



**First floor**



**Ground floor**



**Sans frontières ... (left) bifold doors allow a seamless transition to the outdoor spaces; (above) the living and dining areas are completely open to the garden. Photos: Marcus Clinton**

**A home loan**



Sans frontiers ... (left) bi-fold doors allow a seamless transition to the outdoor spaces; (above) the living and dining areas are completely open to the garden. Photos: Marcus Clifton



Two-faced ... the new wing.

bedrooms," Glover says. "The skylight also brings light into the children's playroom below. It's the other reason we installed a glass wall in the stairwell."

While the owners don't have a separate wing, they do benefit from their own balcony, complete with automated steel blinds. And they are enthusiastic about the en suite bathroom, finished in travertine. "They have their own space but they're secretly pleased when the children arrive in the bedroom first thing in the morning," Glover says.

#### AIM

To design a contemporary home for a growing family that would suit their needs for the long term.

#### HOW LONG

Design three months, planning approval eight months and construction 14 months.

#### BUDGET

About \$2 million, including landscaping.

#### FAVOURITE FEATURES

The staircase and the clear distinction between the old and new parts of the house.

#### INSIDER'S TIP

Look at examples of the architect's work before you employ him or her. There also needs to be a sense of simpatico so you can work together. Renovating or building a house can be an intense process.

#### GREEN POINTS

- External louvers.
- Cross-ventilation.
- Deep eaves on the northern facade.
- Skylight on the first floor.
- Plantation timber for exterior cladding.
- 10,000-litre water tank.
- Solar panels on the roof for heating.

#### ARCHITECT

Form Follows Function, 9327 1344.

#### BUILDER

Cube Projects, 0408 633 506.

#### LANDSCAPE DESIGN

Matt Cantwell, Secret Gardens of Sydney, 9314 5333.

# A home loan designed to last

With a NAB Choice Package home loan, you get a discounted variable rate that will stay with you for the life of the package – not just for the short term. And you can even take it with you when you move to your next home or purchase an investment property. So when you make your next move, you'll always stay ahead.

up to **0.70%** p.a. off

our standard variable rate for the life of your package

## NAB Choice Package home loan

Call 13 13 12, visit your nearest branch  
or [nab.com.au/nextmove](http://nab.com.au/nextmove)



NAB Choice Package home loans from \$150,000. An annual package fee of \$395 applies. Discount of 0.20% p.a. off the standard variable rate applies to new NAB Choice Package Variable Rate Home Loan accounts from \$250,000 while the account is part of a NAB Choice Package. Terms, conditions, fees, charges and lending criteria apply. Terms and conditions are available on request. Subject to normal lending criteria, information is current as at 23/11/2009 and subject to change. ©2009 National Australia Bank Limited ABN 12 064 084 907 NAB2780\_242